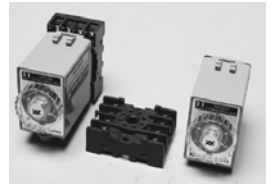
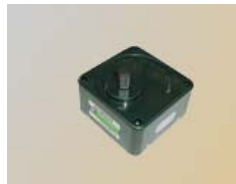


# BRAKE & SPEED CONTROL MOTOR

*NEW H-SERIES*



**OFF - BRAKE**  
**REVERSIBLE**  
**6/15w**

**Q-CON(SPEED CONTROL)**  
**& BRAKE MOTOR**  
**RHKT**

■ **PERFORMANCE DATA (DUTY : 30 Min.)**

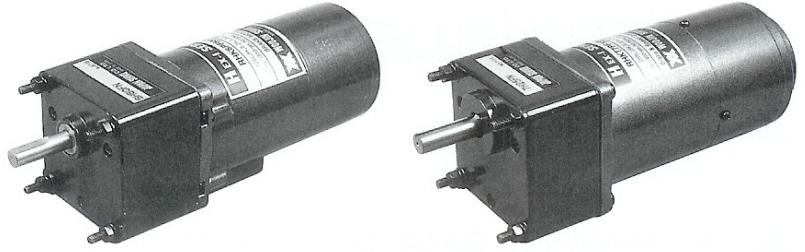
MOTOR TYPE	OUTPUT (W)	VOLTAGE (V)	FREQ. (Hz)	SPEED RANGE (rpm)	RATING TORQUE		STARTING		BRAKE		CONDENSER	
					1200rpm (gf · cm)	90rpm (gf · cm)	CURRENT (mA)	TORQUE (gf · cm)	INPUT (W)	BRAKE TORQUE (gf · cm)	(V)	(μF)
RHKT6PF6-10	6	1 φ 100	50	90~1400	320	310	240	390	6	2000	250	4.0
			60	90~1700	320	310	250	390				
RHKT6PF6-11		1 φ 110	60	90~1700	320	310	250	390	6	2000	250	3.5
RHKT6PF6-20	6	1 φ 200	50	90~1400	320	310	120	390	6	2000	450	1.0
			60	90~1700	320	310	130	390				
RHKT6PF6-22		1 φ 220	60	90~1700	320	310	130	390	6	2000	450	1.0
RHKT6PF6-1U	6	1 φ 115	60	90~1700	320	310	130	390	6	2000	450	3.5
RHKT6PF6-2C	6	1 φ 220	50	90~1400	320	310	120	390	6	2000	450	0.8
				50	90~1400	320	310	120				
RHKT7PF15-10	15	1 φ 100	50	90~1400	1000	470	590	820	6	2000	250	6.0
			60	90~1700	1000	470	520	820				
RHKT7PF15-11		1 φ 110	60	90~1700	1000	470	520	820	6	2000	250	5.0
RHKT7PF15-20	15	1 φ 200	50	90~1400	1000	470	300	820	6	2000	450	1.5
			60	90~1700	1000	470	290	820				
RHKT7PF15-22		1 φ 220	60	90~1700	1000	470	290	820	6	2000	450	1.2
RHKT7PF15-1U	15	1 φ 115	60	90~1700	1000	470	290	820	6	2000	450	5.0
RHKT7PF15-2C	15	1 φ 220	50	90~1400	1000	470	300	820	6	2000	450	1.2
				50	90~1400	1000	470	300				

- MOTOR TYPE은 GEAR HEAD直結用인 PINION軸으로 表示하였습니다.  
STRAIGHT軸의 MOTOR를 希望하시면 形式名의 PF를 S로 바꾸어 注文하십시오.
- 表示한 MOTOR는 UL 또는 CE規格을 適用한 TYPE입니다.
- CONDENSER의 外形은 PAGE F-1을 參照하십시오.
- For motor with straight shaft, please write S in place of PF in MOTOR TYPE.
- MOTOR TYPE in gray screen represents the motors with IMPEDANCE PROTECTION(RHKT6PF6) or THERMAL PROTECTION(RHKT7PF15) according to UL or CE regulation.
- For outline dimension of condenser, refer to Page F-1.

■ **WIRING DIAGRAM**

SPEED CONTROLLER의 結線방법 PAGE B-9을 참조하십시오.

- For connection of speed control & brake motor, refer to wiring diagram page B-9

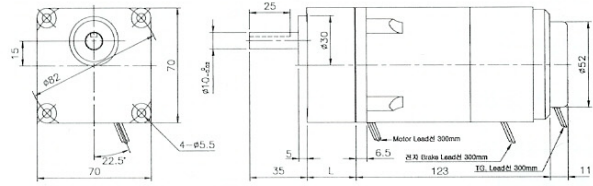
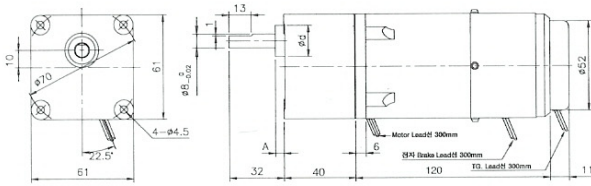


## OUTLINE DIMENSION

Fig.1 GEARED MOTOR

IHKT6PF6 + 6H□FM(6H□FB)  
WT MOTOR 1.3 kg GEAR 0.4kg

RHKT7PF15 + 7H□FM (7H□FB)  
WT MOTOR 1.5 kg GEAR 0.5



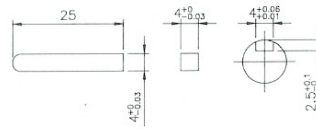
L, A, d, 重量, BOLT

TYPE	減速比	L mm	A mm	d mm	重量 Kg	BOLT
6H □ FM	1/3~1/18	30	3	20	0.3	M4×50
6H □ FB	1/25~1/180	40	3	20	0.4	M4×60

L, 重量, BOLT

TYPE	減速比	L mm	重量 Kg	BOLT
7H □ FM	1/3~1/18	30	0.5	M5×50
7H □ FB	1/25~1/180	40	0.6	M5×60

KEY SIZE



## SPEED-TORQUE CURVE

同一出力の CONTROL MOTOR 와 같습니다.

- For speed-torque characteristics, refer to speed control motor.

OFF - BRAKE

REVERSIBLE

25/40w

Q-CON(SPEED CONTROL)  
& BRAKE MOTOR

RHKT

■ PERFORMANCE DATA (DUTY : 30 Min.)

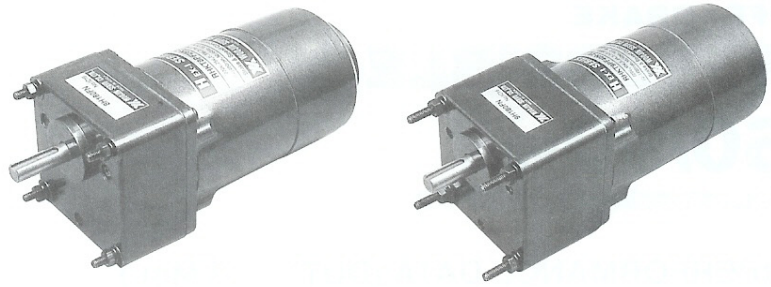
MOTOR TYPE	OUTPUT (W)	VOLTAGE (V)	FREQ. (Hz)	SPEED RANGE (rpm)	RATING TORQUE		STARTING		BRAKE		CONDENSER	
					1200rpm (gf · cm)	90rpm (gf · cm)	CURRENT (mA)	TORQUE (gf · cm)	INPUT (W)	BRAKE TORQUE (gf · cm)	(V)	(μF)
RHKT8PF25-10	25	1 φ 100	50	90~1400	1600	900	900	2100	6	2000	250	10.0
			60	90~1700	1600	900	900	2100				
RHKT8PF25-11		1 φ 110	60	90~1700	1600	900	900	2100				8.0
RHKT8PF25-20	25	1 φ 200	50	90~1400	1600	900	450	2100	6	2000	450	2.5
			60	90~1700	1600	900	450	2100				
RHKT8PF25-22		1 φ 220	60	90~1700	1600	900	450	2100			450	2.0
RHKT8PF25-1U	25	1 φ 115	60	90~1700	1600	900	450	2100	6	2000	450	8.0
RHKT8PF25-2C	25	1 φ 220 1 φ 240	50	90~1400	1600	900	450	2100	6	2000	450	2.0
			50	90~1400	1600	900	450	2100				
RHKT9PF40-10	40	1 φ 100	50	90~1400	3100	1000	1600	3300	10	3300	250	16.0
			60	90~1700	2500	1000	1600	3300				
RHKT9PF40-11		1 φ 110	60	90~1700	2500	1000	1600	3300	10	3300	250	16.0
RHKT9PF40-20	40	1 φ 200	50	90~1400	3100	1000	800	3300	10	3300	450	4.0
			60	90~1700	2500	1000	800	3300				
RHKT9PF40-22		1 φ 220	60	90~1700	2500	1000	800	3300	10	3300	450	3.5
RHKT9PF40-1U	40	1 φ 115	60	90~1700	2500	1000	800	3300	10	3300	450	16.0
RHKT9PF40-2C	40	1 φ 220 1 φ 240	50	90~1400	3100	1000	800	3000	10	3300	450	3.5
			50	90~1400	3100	1000	800	3000				

- MOTOR TYPE은 GEAR HEAD直結用인 PINION軸으로 表示하였습니다.  
STRAIGHT軸의 MOTOR를 希望하시면 形式名의 PF를 S로 바꾸어 注文하십시오.
- □ 表示한 MOTOR는 UL 또는 CE規格을 適用한 TP(THERMAL PROTECT) 内裝形입니다.
- CONDENSER의 外形은 PAGE F-1을 参照하십시오.
- For motor with straight shaft, please write S in place of PF in MOTOR TYPE.
- MOTOR TYPE in gray screen represents the motors with THERMAL PROTECTION according to UL or CE regulation.
- For outline dimension of condenser, refer to Page F-1.

■ WIRING DIAGRAM

SPEED CONTROLLER의 結線방법 PAGE B-9을 참조하십시오.

- For connection of speed control & brake motor, refer to wiring diagram page B-9

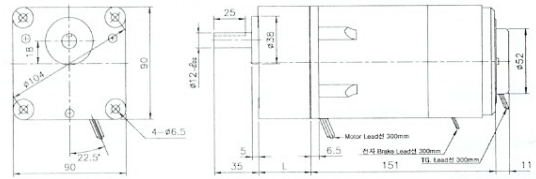
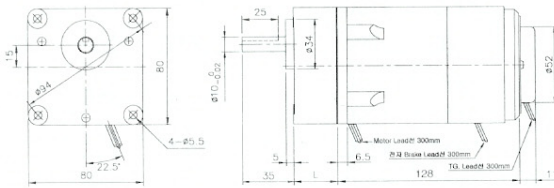


## OUTLINE DIMENSION

Fig.1 GEARED MOTOR

RHKT8PF25 + 8H□FM (8H□FB)  
WT MOTOR 1.8 kg GEAR 0.5/0.6kg

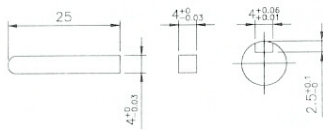
RHKT9PF40 + 9H□FM (9H□FB)  
WT MOTOR 3.0 kg GEAR 0.8/0.9kg



L, 重量, BOLT

TYPE	RATIO	L mm	重量 kg	BOLT
8H□FM	1/3 ~ 1/18	32	0.5	M5 × 60
8H□FB	1/25 ~ 1/180	42	0.6	M5 × 70

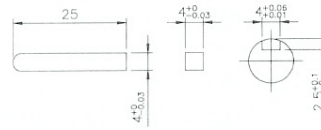
KEY SIZE



L, 重量, BOLT

TYPE	RATIO	L mm	重量 kg	BOLT
9H□FM	1/3 ~ 1/18	42	0.8	M6 × 70
9H□FB	1/25 ~ 1/180	60	0.9	M6 × 90

KEY SIZE



## SPEED-TORQUE CURVE

同一出力の CONTROL MOTOR 와 같습니다.

- For speed-torque characteristics, refer to speed control motor.

**OFF - BRAKE**  
**REVERSIBLE**  
**60/90w**

**Q-CON(SPEED CONTROL)**  
**& BRAKE MOTOR**  
**RHKT**

■ **PERFORMANCE DATA (DUTY : 30 Min.)**

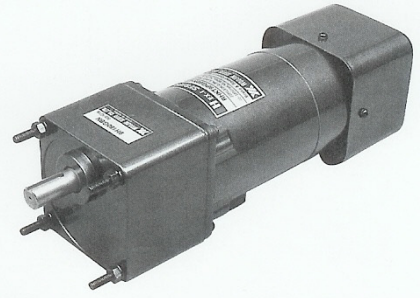
MOTOR TYPE	OUTPUT (W)	VOLTAGE (V)	FREQ. (Hz)	SPEED RANGE (rpm)	RATING TORQUE		STARTING		BRAKE		CONDENSER	
					1200rpm (gf·cm)	90rpm (gf·cm)	CURRENT (mA)	TORQUE (gf·cm)	INPUT (W)	BRAKE TORQUE (gf·cm)	(V)	(μF)
RHKT9PG60-10	60	1 φ 100	50	90~1400	4400	1200	2900	4700	10	10000	250	25.0
			60	90~1700	3700	1200	2900	4700				
RHKT9PG60-11		1 φ 110	60	90~1700	3700	1200	2800	4700	10	10000	250	20.0
RHKT9PG60-20	60	1 φ 200	50	90~1400	4400	1200	1500	4700	10	10000	450	6.0
			60	90~1700	3700	1200	1400	4700				
RHKT9PG60-22		1 φ 220	60	90~1700	3700	1200	1400	4700	10	10000	450	5.0
RHKT9PG60-1U	60	1 φ 115	60	90~1700	3700	1200	1400	4700	10	10000	450	20
RHKT9PG60-2C	60	1 φ 220	50	90~1400	4400	1200	1500	4700	10	10000	450	5.0
			50	90~1400	4400	1200	1500	4700				
RHKT9PG90-10	90	1 φ 100	50	90~1400	6000	2500	3000	6200	10	10000	250	30.0
			60	90~1700	5500	2500	3000	6200				
RHKT9PG90-11		1 φ 110	60	90~1700	5500	2500	3000	6200	10	10000	250	25.0
RHKT9PG90-20	90	1 φ 200	50	90~1400	6000	2500	1500	6200	10	10000	450	7.0
			60	90~1700	5500	2500	1500	6000				
RHKT9PG90-22		1 φ 220	60	90~1700	5500	2500	1500	6000	10	10000	450	6.0
RHKT9PG90-1U	90	1 φ 115	60	90~1700	5500	2500	1500	6000	10	10000	450	25.0
RHKT9PG90-2C	90	1 φ 220	50	90~1400	6000	2500	1500	6000	10	10000	450	6.0
			50	90~1400	6000	2500	1500	6000				

- MOTOR TYPE은 GEAR HEAD直結用인 PINION軸으로 表示하였습니다.  
STRAIGHT軸의 MOTOR를 希望하시면 形式名의 PF를 S로 바꾸어 注文하십시오.
- 表示한 MOTOR는 UL 또는 CE規格을 適用한 TP(THERMAL PROTECT) 内裝形입니다.
- CONDENSER의 外形은 PAGE F-1을 参照하십시오.
- For motor with straight shaft, please write S in place of PF in MOTOR TYPE.
- MOTOR TYPE in gray screen represents the motors with THERMAL PROTECTION according to UL or CE regulation.
- For outline dimension of condenser, refer to Page F-1.

■ **WIRING DIAGRAM**

SPEED CONTROLLER의 결선방법 PAGE B-9을 참조하십시오.

- For connection of speed control & brake motor, refer to wiring diagram page B-9

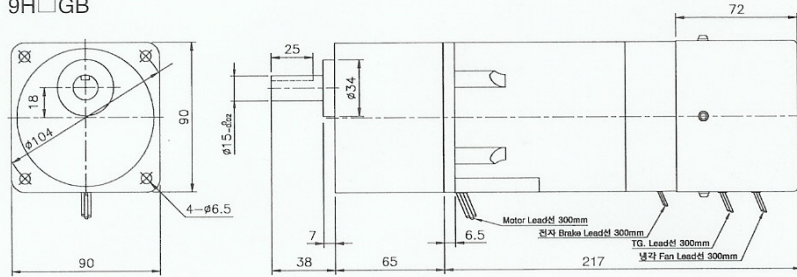


## OUTLINE DIMENSION

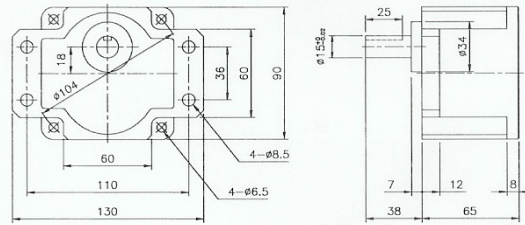
Fig.1 GEARED MOTOR

RHKT9PG60(90) + 9H□GB  
9H□GB

WT MOTOR 3.9 kg GEAR 1.5kg



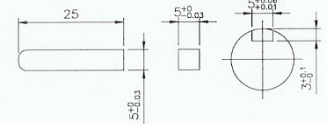
9H□GB-F



BOLT

TYPE	BOLT
9H□GB	M6×95
9H□GB-F	M6×25

KEY SIZE



## SPEED-TORQUE CURVE

同一出力の CONTROL MOTOR 와 같습니다.

· For speed-torque characteristics, refer to speed control motor.