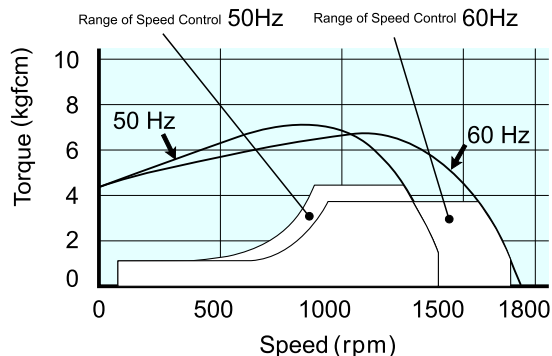
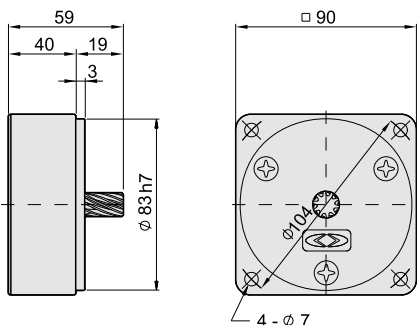


Decimal Gear Head

G-5U10X-K

Speed-Torque Curve

M-51K60<sub>N</sub>-AFV

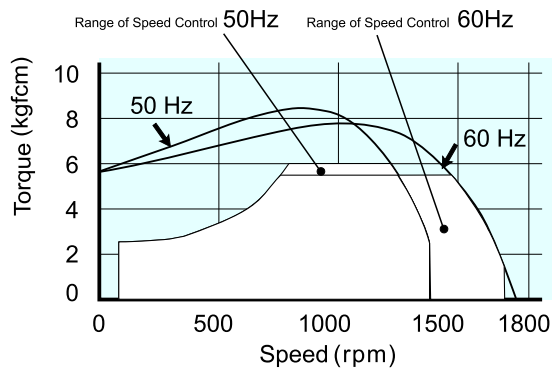
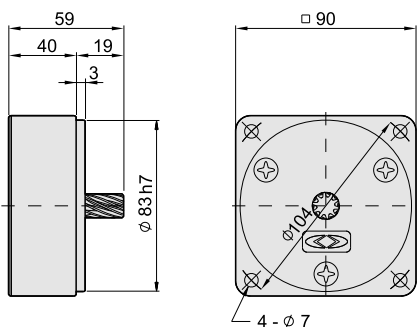


Decimal Gear Head

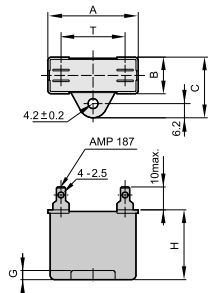
G-5N10X-K

Speed - Torque Curve

M-51K90U-AFV



■ Dimensions and Specifications - Capacitor



Capacitor μF(V)	A	B	C	H	G	T	Max. Temp
20(250V)	50	22	32	35	4.5	32	60°C
5(450V)	50	22	32	35	4.5	32	70°C
25(250V)	50	22	32	35	4.5	32	60°C
6(450V)	50	22	32	35	4.5	32	70°C

■ Gearhead - Max. Permissible Torque

Dark area: the rotating direction of motor shaft rotates in the same direction as the shaft of gearhead.  
Shallow area the rotating direction of motor shaft is opposite to the direction of the shaft of gearhead.

Model	Speed (rpm)	With Decimal Gearhead																						
		500	300	200	180	150	120	100	90	75	60	50	30	20	15	10	9	7.5	6	5	3	2	1.5	1
	50Hz	3	5	7.5	-	10	12.5	15	-	20	25	30	50	75	100	150	150	200	250	300	500	750	1000	1500
	60Hz	3.6	6	9	10	-	15	18	20	-	30	36	60	90	120	180	200	300	360	600	900	1200	1800	
G-5N□-K G-5U□-K G-5U□-KH	Max. Allowable Torque (kgfcm)	6.7	11	16	18	23	28	33	36	45	54	65	100	100	100	100	100	100	100	100	100	100	100	
G-5U□-K G-5U□-KH	Max. Allowable Torque (kgfcm)	14	23	35	38	46	58	69	77	92	111	133	216	200	200	200	200	200	200	200	200	200	200	

## Variable Speed Motor

Frame

**5**

Motor

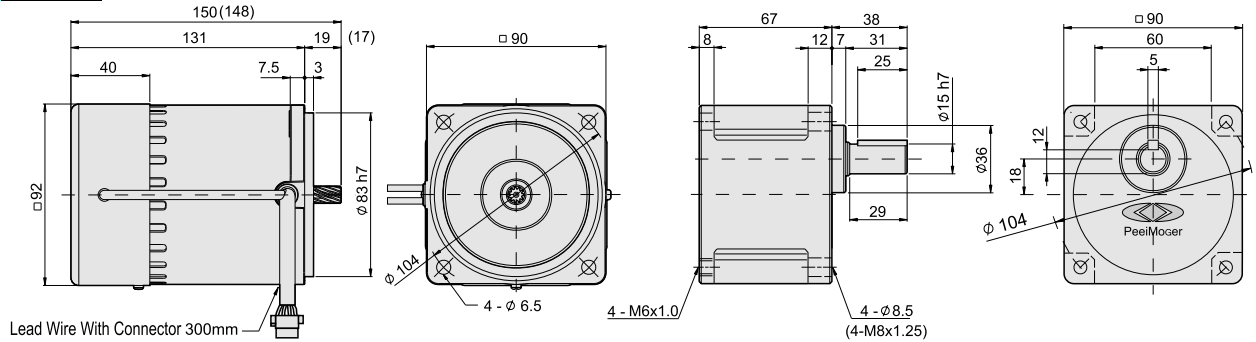
M-5IK60-N □ V

Gear Head

G-5U □ -K

Output

**60W**



Lead Wire With Connector 300mm  
 ( ) The dimension of Parenthesis is N model gear shaft and the dimension of applied Gearhead, as G-5N □ -K/L

Frame

**5**

Motor

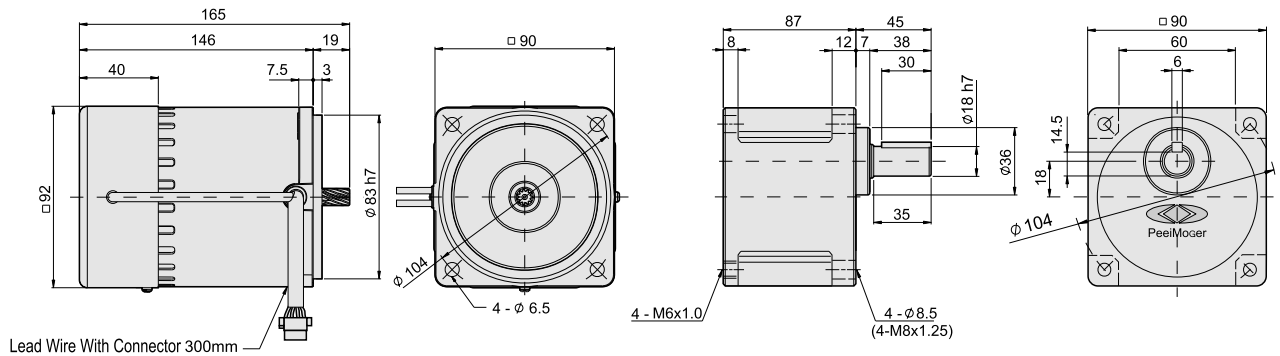
M-5IK90U- □ V

Gear Head

G-5U □ -KH (Developing)

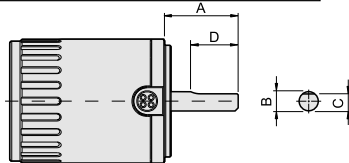
Output

**90W**



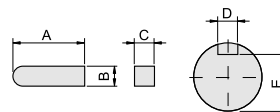
Lead Wire With Connector 300mm

### Dimensions - Motor, Round Shaft



Model	A	B	C	D
M-5IK60A- □ V	37	∅ 12 h7	11 <sup>0</sup> <sub>-0.15</sub>	30
M-5IK90A- □ V	37	∅ 12 h7	11 <sup>0</sup> <sub>-0.15</sub>	30

### Dimensions - Key & Keyway



Model	A	B	C	D	E
G-5U □ -K	25	5 <sup>0</sup> <sub>-0.030</sub>	5 <sup>0</sup> <sub>-0.030</sub>	5 <sup>+0.050</sup> <sub>+0</sub>	12 <sup>0</sup> <sub>-0.15</sub>
G-5U □ -KH	30	6 <sup>0</sup> <sub>-0.030</sub>	6 <sup>0</sup> <sub>-0.030</sub>	6 <sup>+0.050</sup> <sub>+0</sub>	14.5 <sup>0</sup> <sub>-0.15</sub>

### Specifications - Motor

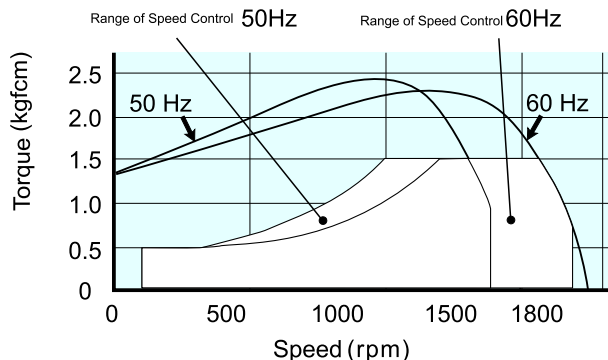
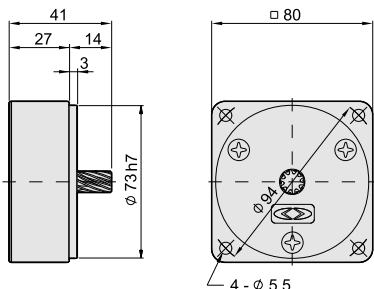
Model	Poles	Output (W)	Voltage (V)	Frequency (Hz)	Duty	Speed Range (r.p.m)	Rated Torque (kgfcm)		Starting Current (A)	Starting Torque (kgfcm)	Capacitor uF(V)	Speed Controller ±1%	Applied Gearhead Type		
							1200	90					Metal Bearing	Ball Bearing	Decimal Gearhead
M-5IK60N- □ -AFV	4	60	110	50	CONT.	90~1400	4.4	1.2	2.5	4.2	20(250V)	US-5I60A-A	G-5N □ -L	G-5N □ -K	G-5N10X-K
				60		90~1700	3.7	1.2	2.4	4.2					
M-5IK60N- □ -CFV	4	60	220	50	CONT.	90~1400	4.4	1.2	1.3	4.2	5(450V)	US-5I60A-C	-	G-5U □ -K	G-5U10X-K
				60		90~1700	3.7	1.2	1.2	4.2					
M-5IK90U- □ -AFV	4	90	110	50	CONT.	90~1400	6.0	2.5	2.9	5.5	25(250V)	US-5I90A-A	-	G-5U □ -K	G-5U10X-K
				60		90~1700	5.5	2.5	2.9	5.5					
M-5IK90U- □ -CFV	4	90	220	50	CONT.	90~1400	6.0	2.5	1.5	5.5	6(450V)	US-5I90A-C	-	G-5U □ -KH	G-5U10X-K
				60		90~1700	5.5	2.5	1.5	5.5					

Decimal Gear Head

Speed-Torque Curve

G-4N10X-K

M-4IK25N-AV

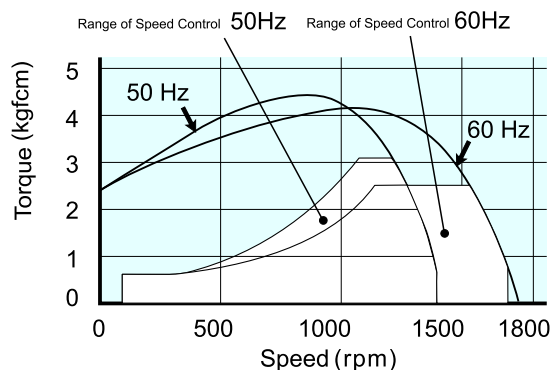
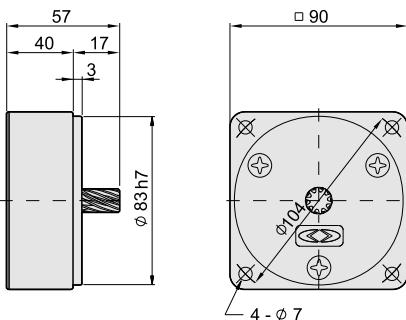


Decimal Gear Head

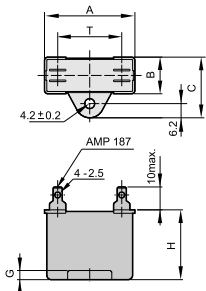
Speed - Torque Curve

G-5N10X-K

M-5IK40N-AV



■ Dimensions and Specifications - Capacitor



Capacitor uF(V)	A	B	C	H	G	T	Max. Temp
8(250V)	38	20	30	29	5	22	60°C
2(450V)	38	20	30	29	5	22	70°C
12(250V)	38	20	30	29	5	22	60°C
3(450V)	38	20	30	29	5	22	70°C

■ Gearhead - Max. Permissible Torque

Dark area: the rotating direction of motor shaft rotates in the same direction as the shaft of gearhead.  
 Shallow area the rotating direction of motor shaft is opposite to the direction of the shaft of gearhead.

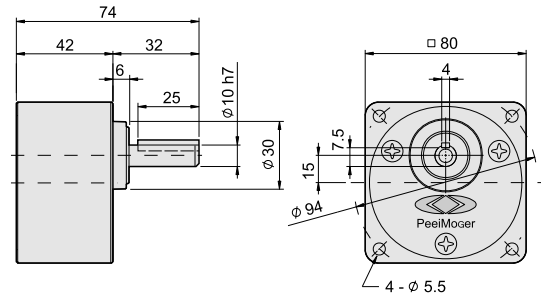
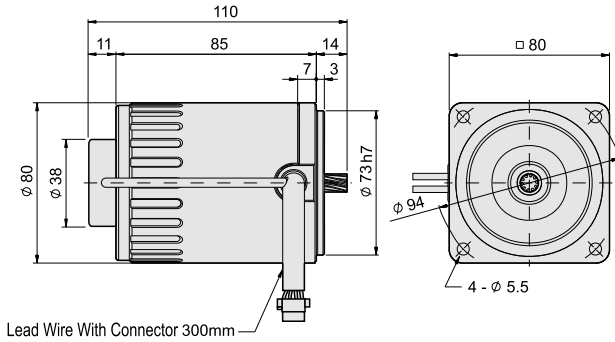
Model	Speed (rpm) Gear Ratio	With Decimal Gearhead																						
		500	300	200	180	150	120	100	90	75	60	50	30	20	15	10	9	7.5	6	5	3	2	1.5	1
G-4N□-K L	50Hz	3	5	7.5	-	10	12.5	15	-	20	25	30	50	75	100	150	-	200	250	300	500	750	1000	1500
	60Hz	3.6	6	9	10	-	15	18	20	-	30	36	60	90	120	180	200	-	300	360	600	900	1200	1800
G-5N□-K L	50Hz	6.7	11	16	18	23	28	33	36	45	54	65	100	100	100	100	100	100	100	100	100	100	100	100
	60Hz	6.7	11	16	18	23	28	33	36	45	54	65	100	100	100	100	100	100	100	100	100	100	100	100

## Variable Speed Motor

Frame **4** Motor  
M-4IK25N-□V

Output **25W**

Gear Head  
G-4N□- $\frac{K}{L}$

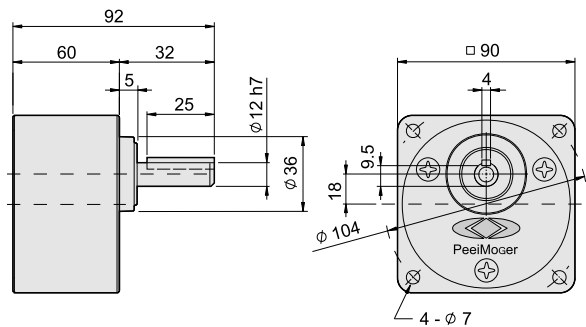
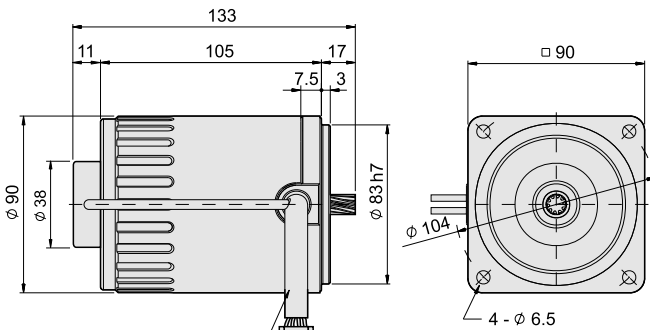


Lead Wire With Connector 300mm

Frame **5** Motor  
M-5IK40N-□V

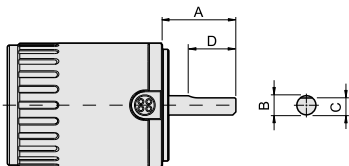
Output **40W**

Gear Head  
G-5N□- $\frac{K}{L}$



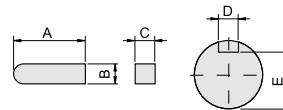
Lead Wire With Connector 300mm

### Dimensions - Motor, Round Shaft



Model	A	B	C	D
M-4IK25A-□V	32	∅8 h7	7 <sup>0</sup> <sub>-0.15</sub>	25
M-5IK40A-□V	37	∅10 h7	9 <sup>0</sup> <sub>-0.15</sub>	30

### Dimensions - Key & Keyway



Model	A	B	C	D	E
G-4N□- $\frac{K}{L}$	25	4 <sup>0</sup> <sub>-0.030</sub>	4 <sup>0</sup> <sub>-0.030</sub>	4 <sup>+0.060</sup> <sub>+0.010</sub>	7.5 <sup>0</sup> <sub>-0.15</sub>
G-5N□- $\frac{K}{L}$	25	4 <sup>0</sup> <sub>-0.030</sub>	4 <sup>0</sup> <sub>-0.030</sub>	4 <sup>+0.060</sup> <sub>+0.010</sub>	9.5 <sup>0</sup> <sub>-0.15</sub>

### Specifications - Motor

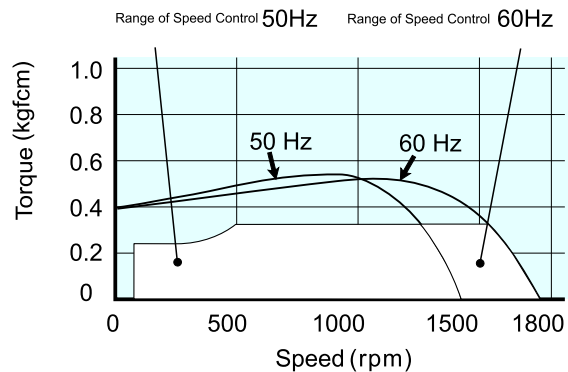
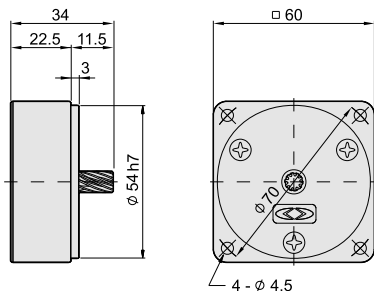
Model	Poles	Output (W)	Voltage (V)	Frequency (Hz)	Duty	Speed Range (r.p.m)	Rated Torque		Starting Current (A)	Starting Torque (kgfcm)	Capacitor uF(V)	Speed Controller	Applied Gearhead Type		
							1200	90					Metal Bearing	Ball Bearing	Decimal Gearhead
M-4IK25N-AV	4	25	110	50	CONT.	90~1400	1.4	0.45	1.0	1.3	8(250V)	US-4I25A-A	G-4N□-L	G-4N□-K	G-4N10X-K
							1.4	0.45							
M-4IK25N-CV	4	25	220	50	CONT.	90~1400	1.4	0.45	0.5	1.3	2(450V)	US-4I25A-C	G-4N□-L	G-4N□-K	G-4N10X-K
							1.4	0.45							
M-5IK40N-AV	4	40	110	50	CONT.	90~1400	3.1	0.6	1.6	2.3	12(250V)	US-5I40A-A	G-5N□-L	G-5N□-K	G-5N10X-K
							2.5	0.6							
M-5IK40N-CV	4	40	220	50	CONT.	90~1400	3.1	0.6	0.8	2.3	3(450V)	US-5I40A-C	G-5N□-L	G-5N□-K	G-5N10X-K
							2.5	0.6							

Decimal Gear Head

G-2N10X-K

Speed-Torque Curve

M-2IK6N-AV

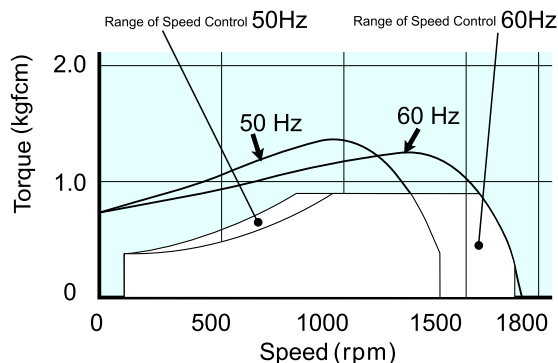
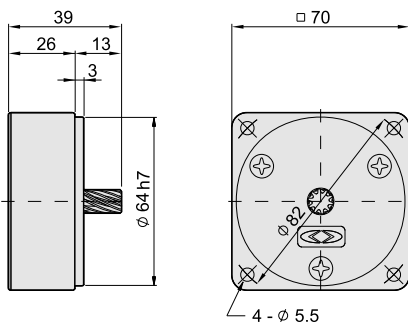


Decimal Gear Head

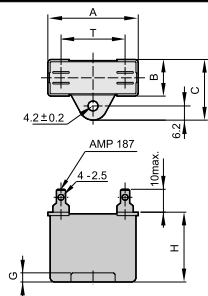
G-3N10X-K

Speed - Torque Curve

M-3IK15N-AV



Dimensions and Specifications - Capacitor



Capacitor (μF/V)	A	B	C	H	G	T	Max. Temp
3.5(250V)	32	13	23	21	4	17	60°C
1(450V)	37	12.5	22.5	22	5	22	70°C
5(250V)	32	13	23	21	4	17	60°C
1.2(450V)	37	12.5	22.5	22	5	22	70°C

Gearhead - Max. Permissible Torque

Dark area: the rotating direction of motor shaft rotates in the same direction as the shaft of gearhead.  
Shallow area the rotating direction of motor shaft is opposite to the direction of the shaft of gearhead.

Model	Speed (rpm)	With Decimal Gearhead																								
		500	300	200	180	150	120	100	90	75	60	50	30	20	15	10	9	7.5	6	5	3	2	1.5	1		
G-2N□-K L	50Hz	3	5	7.5	-	10	12.5	15	18	20	25	30	36	50	75	100	150	180	200	250	300	360	500	750	1000	1500
	60Hz	3.6	6	9	-	10	15	18	20	25	30	36	50	60	90	120	180	200	300	360	600	900	1200	1800	1800	
G-3N□-K L	50Hz	1.0	1.6	2.5	2.7	3.4	4.1	5.0	5.4	6.7	8.1	9.7	16	23	25	25	25	25	25	25	25	25	25	25	25	25
	60Hz	3.6	6	9	10	12	15	18	20	25	30	36	50	60	90	120	180	200	300	360	600	900	1200	1800	1800	

