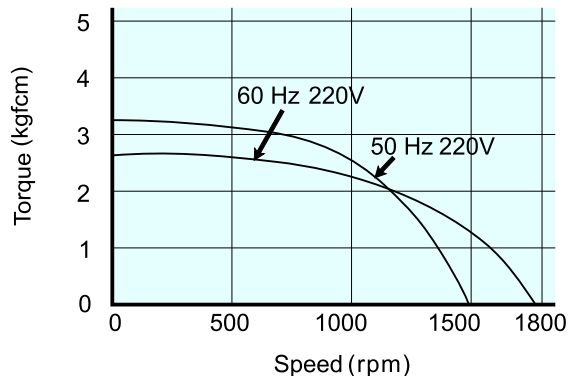
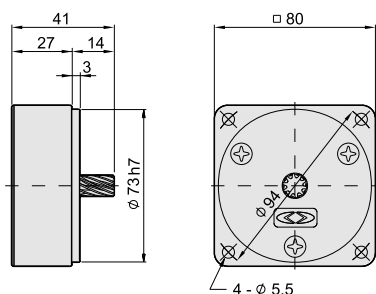


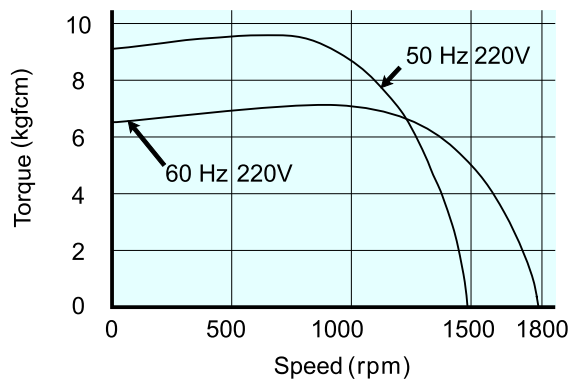
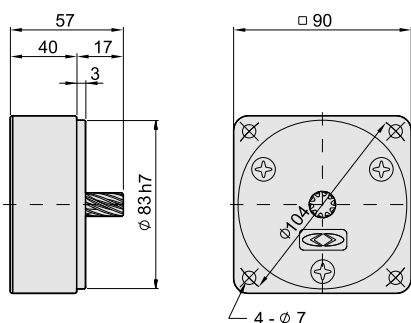
Decimal Gear Head
G-4N10X-K

Speed - Torque Curve
M-4IK25N-ST

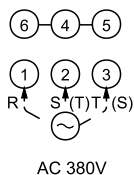
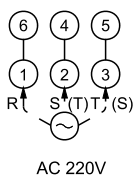


Decimal Gear Head
G-5N10X-K

Speed - Torque Curve
M-5IK40N-ST



Wiring Diagram



● with () : for cw
w/o () : for ccw

Gearhead - Max. Permissible Torque

Dark area: the rotating direction of motor shaft rotates in the same direction as the shaft of gearhead.
Shallow area: the rotating direction of motor shaft is opposite to the direction of the shaft of gearhead.

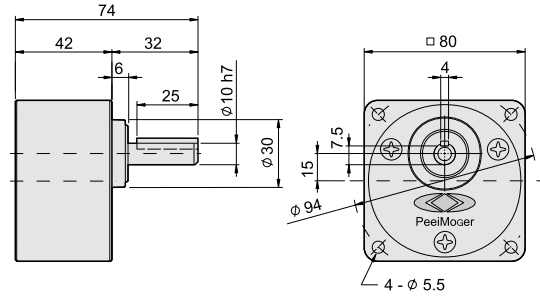
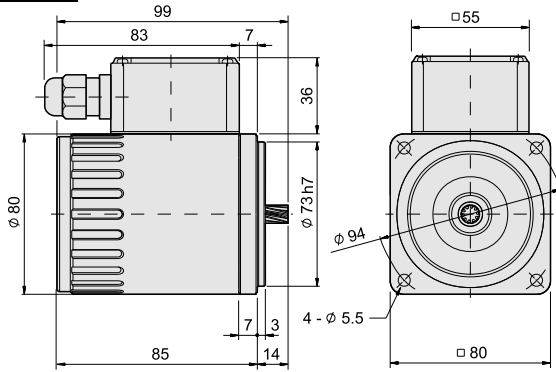
Model	Speed (rpm)	Applied Gearhead Type																						
		500	300	200	180	150	120	100	90	75	60	50	30	20	15	10	9	7.5	6	5	3	2	1.5	1
	50Hz	3	5	7.5	-	10	12.5	15	-	20	25	30	50	75	100	150	-	200	250	300	500	750	1000	1500
	60Hz	3.6	6	9	10	-	15	18	20	-	30	36	60	90	120	180	200	-	300	360	600	900	1200	1800
G-4N□-K L	Max. Allowable Torque (kgfcm)	4.0	6.7	10	11	13	16	20	21	26	32	39	65	80	80	80	80	80	80	80	80	80	80	80
G-5N□-K L	Max. Allowable Torque (kgfcm)	6.7	11	16	18	23	28	33	36	45	54	65	100	100	100	100	100	100	100	100	100	100	100	100

Three Phase Induction Motor With Terminal Box

Frame **4** Motor
M-4IK25N-□T

Output **25W**

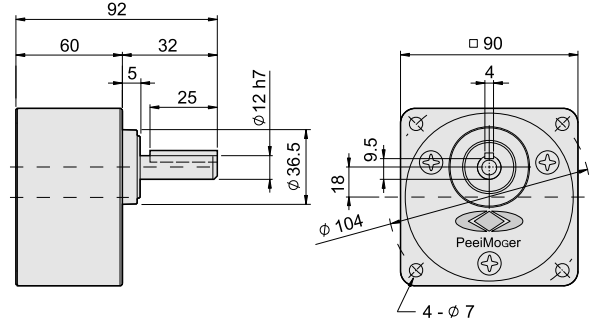
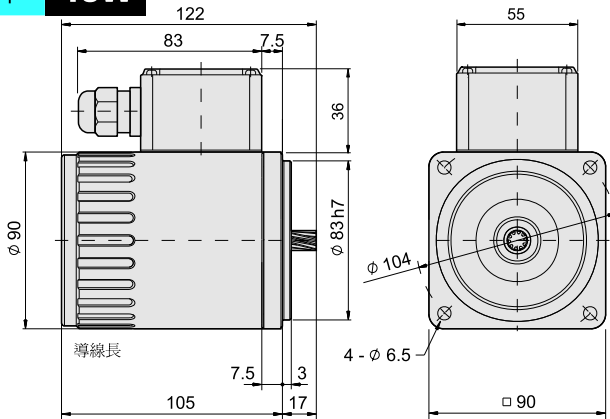
Gear Head
G-4N□-^K_L



Frame **5** Motor
M-5IK40N-□T

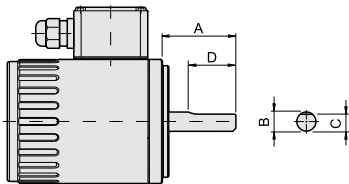
Output **40W**

Gear Head
G-5N□-^K_L

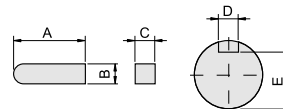


Specifications - Motor, Round Shaft

Dimensions - Key & Keyway



Model	A	B	C	D
M-4IK25A-□□	32	φ8 h7	7 ⁰ _{-0.15}	25
M-5IK40A-□□	37	φ10 h7	9 ⁰ _{-0.15}	30



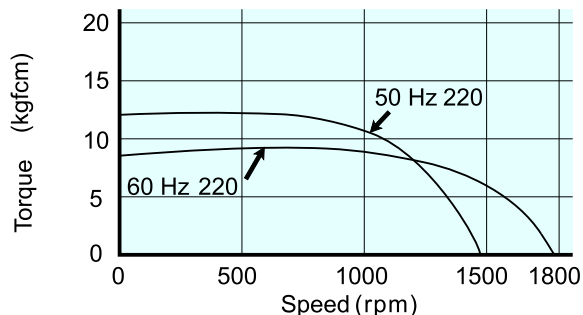
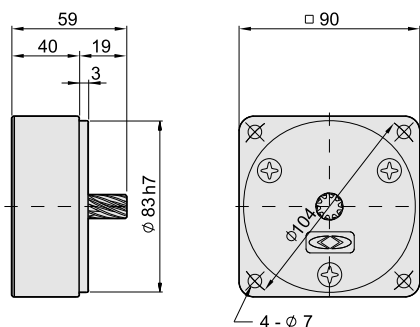
Model	A	B	C	D	E
G-4N□- ^K _L	25	4 ⁰ _{-0.03}	4 ⁰ _{-0.03}	4 ^{+0.06} _{+0.01}	7.5 ⁰ _{-0.15}
G-5N□- ^K _L	25	4 ⁰ _{-0.03}	4 ⁰ _{-0.03}	4 ^{+0.06} _{+0.01}	9.5 ⁰ _{-0.15}

Specifications - Motor

Model	Poles	Output (W)	Voltage (V)	Frequency (Hz)	Duty	Rated Load			Applied Gearhead Type				
						Current (A)	Speed (r p m)	Torque (kgfcm)	Starting Current (A)	Starting Torque (kgfcm)	Metal Bearing	Ball Bearing	Decimal Gearhead
M-4IK25N-ST	4	25	220	50	CONT.	0.22	1375	1.8	0.56	5.2	G-4N□-L	G-4N□-K	G-4N10X-K
						0.19	1650	1.5	0.52	3.9			
M-5IK40N-ST	4	40	220	50	CONT.	0.31	1400	2.8	1.10	8.8	G-5N□-L	G-5N□-K	G-5N10X-K
						0.27	1675	2.3	1.00	6.6			

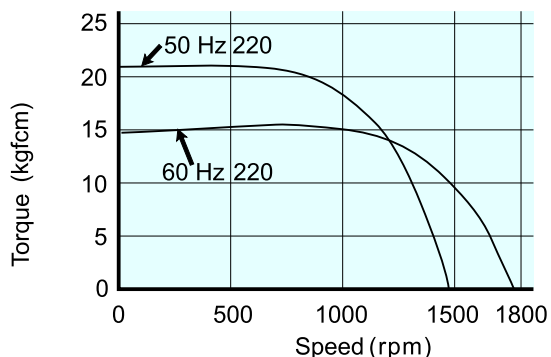
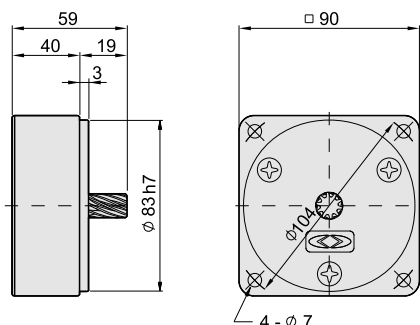
Decimal Gear Head
G-5U10X-K

Speed - Torque Curve
M-5IK60_N-SF



Decimal Gear Head
G-5U10X-K

Speed - Torque Curve
M-5IK90U-SF



■ Wiring Diagram



● with () : for cw
w/o () : for ccw

■ Gearhead - Max. Permissible Torque

Dark area: the rotating direction of motor shaft rotates in the same direction as the shaft of gearhead.
Shallow area the rotating direction of motor shaft is opposite to the direction of the shaft of gearhead.

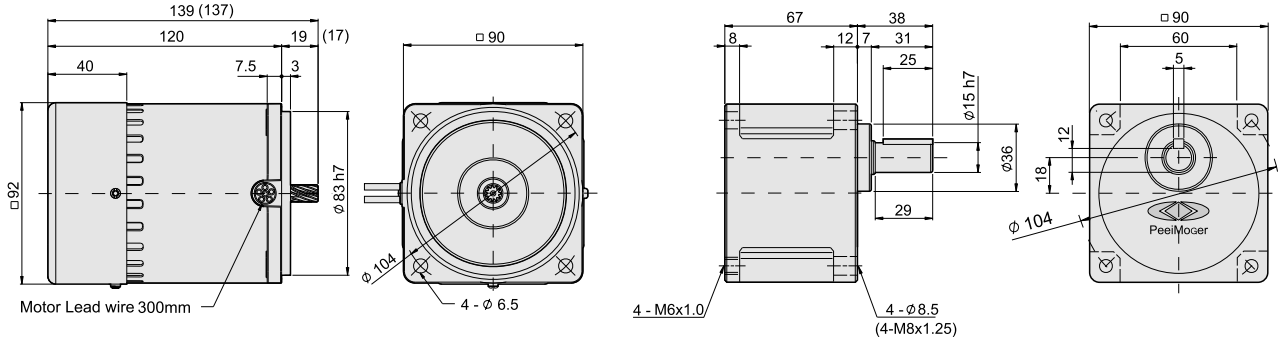
Model	Speed (rpm) Gear Ratio	Applied Gearhead Type																						
		500	300	200	180	150	120	100	90	75	60	50	30	20	15	10	9	7.5	6	5	3	2	1.5	1
G-5N□-K G-5U□-K G-5U□-KH	50Hz	3	5	7.5	-	10	12.5	15	-	20	25	30	50	75	100	150	200	250	300	500	750	1000	1500	
	60Hz	3.6	6	9	10	-	15	18	-	20	30	36	60	90	120	180	200	300	360	600	900	1200	1800	
	Max. Allowable Torque (kgfcm)	6.7	11	16	18	23	28	33	36	45	54	65	100	100	100	100	100	100	100	100	100	100	100	100
G-5U□-K G-5U□-KH	50Hz	10	16	24	27	32	40	48	54	64	77	93	155	200	200	200	200	200	200	200	200	200	200	200
	60Hz	-	-	-	-	-	-	-	-	-	-	-	155	226	300	300	300	-	-	300	300	300	300	300
G-5U□-K G-5U□-KH	50Hz	14	23	35	38	46	58	69	77	92	111	133	216	200	200	200	200	200	200	200	200	200	200	200
	60Hz	-	-	-	-	-	-	-	-	-	-	-	216	300	300	300	300	-	-	300	300	300	300	300

Three Phase Induction Motor

Frame **5** Motor
M-5IK60 N-□□

Gear Head
G-5U□-K

Output **60W**

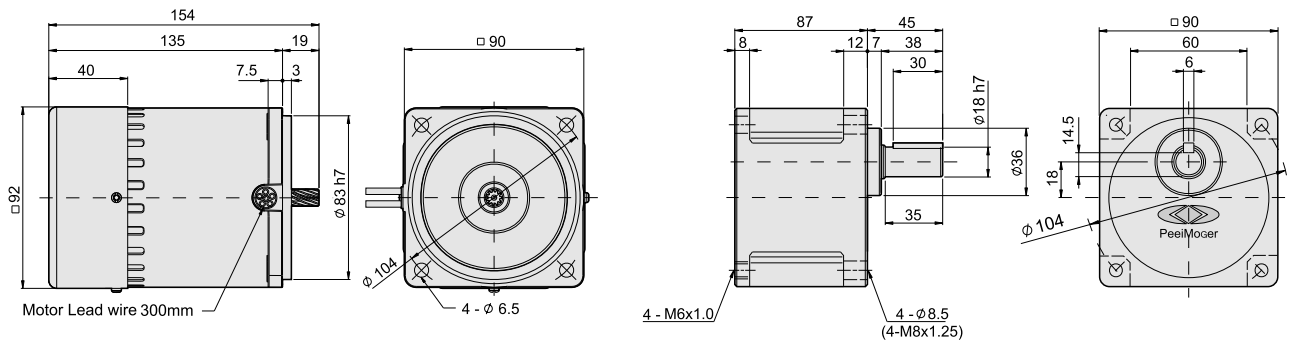


● () The dimension of Parenthesis is N model gear shaft and the dimension of applied Gearhead ,as G-5N□-K/L

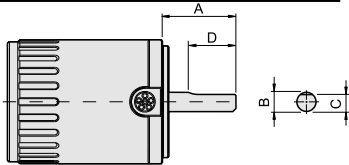
Frame **5** Motor
M-5IK90U- □□

Gear Head
G-5U□-KH (Developing)

Output **90W**

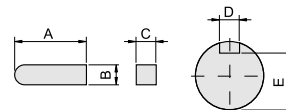


Specifications - Motor, Round Shaft



Model	A	B	C	D
M-5IK60A-□□	37	∅12 h7	11 ⁰ _{-0.15}	30
M-5IK90A-□□	37	∅12 h7	11 ⁰ _{-0.15}	30

Dimensions - Key & Keyway



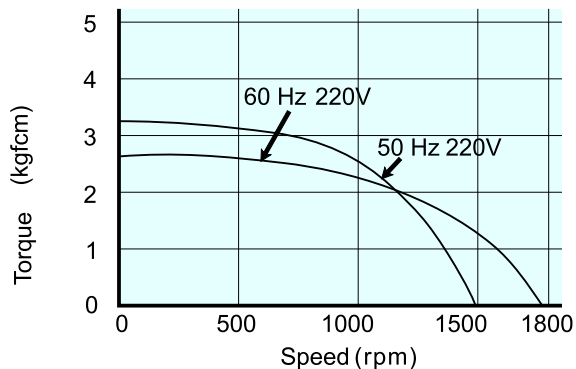
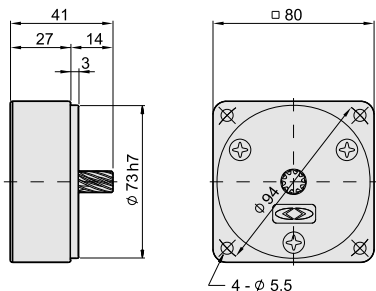
Model	A	B	C	D	E
G-5U□-K	25	5 ⁰ _{-0.030}	5 ⁰ _{-0.030}	5 ^{+0.050} ₊₀	12 ⁰ _{-0.15}
G-5U□-KH	30	6 ⁰ _{-0.030}	6 ⁰ _{-0.030}	6 ^{+0.050} ₊₀	14.5 ⁰ _{-0.15}

Specifications - Motor

Model	Poles	Output (W)	Voltage (V)	Frequency (Hz)	Duty	Rated Load			Starting Current (A)	Starting Torque (kgfcm)	Applied Gearhead Type			
						Current (A)	Speed (r p m)	Torque (kgfcm)			Metal Bearing	Ball Bearing	Decimal Gearhead	
M-5IK60 N-SF	4	60	220	50	CONT.	0.46	1400	4.2	1.5	1.2	G-5N□-L	-	G-5N□-K	G-5N10X-K
				60		0.40	1675	3.5	1.4	8.6			G-5U□-K	G-5U10X-K
M-5IK90U-SF	4	90	220	50	CONT.	0.65	1400	6.3	2.3	21	-	-	G-5U□-K	G-5U10X-K
				60		0.56	1675	5.3	2.1	15			G-5U□-KH	G-5U10X-K

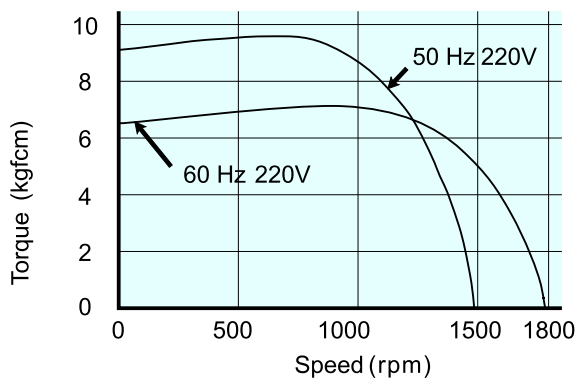
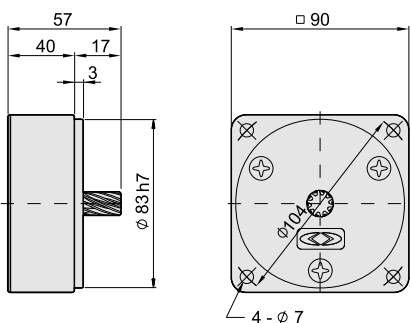
Decimal Gear Head G-4N10X-K

Speed - Torque Curve M-4IK25N-S



Decimal Gear Head G-5N10X-K

Speed - Torque Curve M-5IK40N-S



Wiring Diagram



● with () : for cw
w/o () : for ccw

Gearhead - Max. Permissible Torque

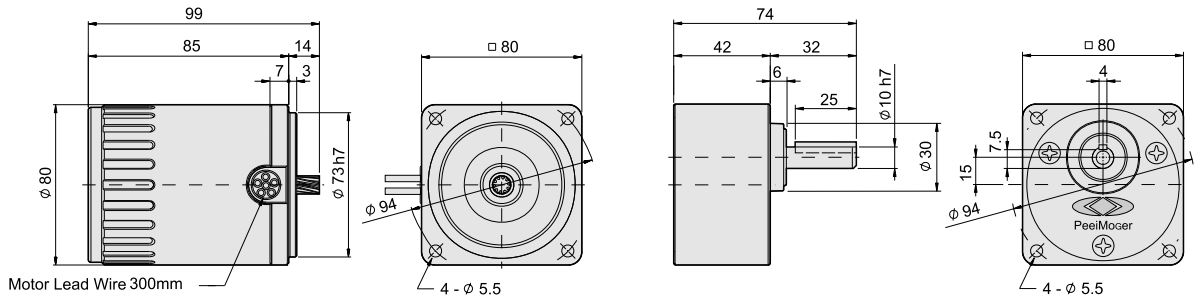
Dark area: the rotating direction of motor shaft rotates in the same direction as the shaft of gearhead.
Shallow area: the rotating direction of motor shaft is opposite to the direction of the shaft of gearhead.

Model	Speed (rpm) Gear Ratio	Applied Gearhead Type																						
		500	300	200	180	150	120	100	90	75	60	50	30	20	15	10	9	7.5	6	5	3	2	1.5	1
G-4N□-K L	50Hz	3	5	7.5	-	10	12.5	15	-	20	25	30	50	75	100	150	-	200	250	300	500	750	1000	1500
	60Hz	3.6	6	9	10	-	15	18	20	-	30	36	60	90	120	180	200	-	300	360	600	900	1200	1800
G-5N□-K L	50Hz	6.7	11	16	18	23	28	33	36	45	54	65	100	100	100	100	100	100	100	100	100	100	100	100
	60Hz	6.7	11	16	18	23	28	33	36	45	54	65	100	100	100	100	100	100	100	100	100	100	100	100

Three Phase Induction Motor

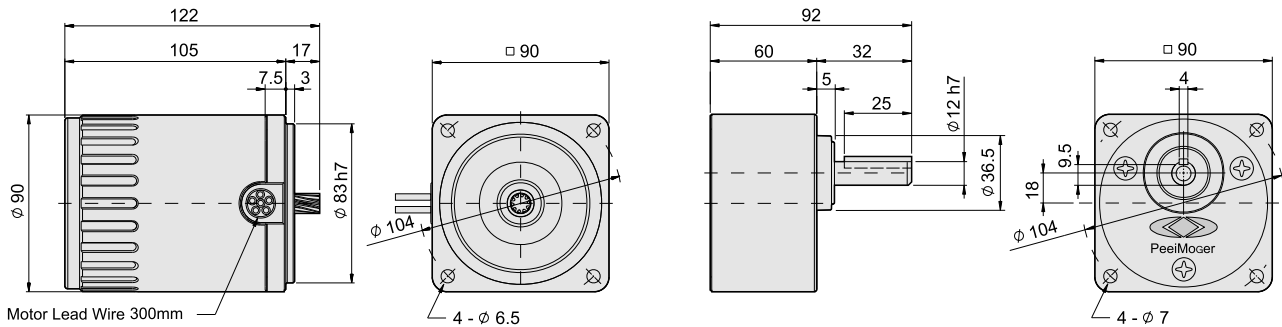
Frame 4
Motor
 M-4IK25N-□□
Output 25W

Gear Head
 G-4N□-^K_L

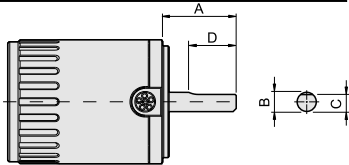


Frame 5
Motor
 M-5IK40N-□□
Output 40W

Gear Head
 G-5N□-^K_L

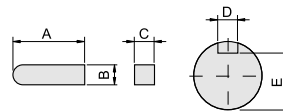


Specifications - Motor, Round Shaft



Model	A	B	C	D
M-4IK25A-□□	32	∅8 h7	7 ⁰ _{-0.15}	25
M-5IK40A-□□	37	∅10 h7	9 ⁰ _{-0.15}	30

Dimensions - Key & Keyway



Model	A	B	C	D	E
G-4N□- ^K _L	25	4 ⁰ _{-0.030}	4 ⁰ _{-0.030}	4 ^{+0.060} _{+0.010}	7.5 ⁰ _{-0.15}
G-5N□- ^K _L	25	4 ⁰ _{-0.030}	4 ⁰ _{-0.030}	4 ^{+0.060} _{+0.010}	9.5 ⁰ _{-0.15}

Specifications - Motor

Model	Poles	Output (w)	Voltage (V)	Frequency (Hz)	Duty	Rated Load			Starting Current (A)	Starting Torque (kgfcm)	Applied Gearhead Type		
						Current (A)	Speed (r.p.m)	Torque (kgfcm)			Metal Bearing	Ball Bearing	Decimal Gearhead
M-4IK25N-S	4	25	220	50	CONT.	0.22	1375	1.8	0.56	5.2	G-4N□-L	G-4N□-K	G-4N10X-K
				60		0.19	1650	1.5	0.52	3.9			
M-5IK40N-S	4	40	220	50	CONT.	0.31	1400	2.8	1.10	8.8	G-5N□-L	G-5N□-K	G-5N10X-K
				60		0.27	1675	2.3	1.00	6.6			