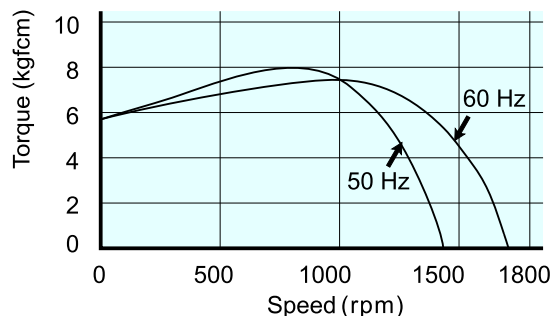
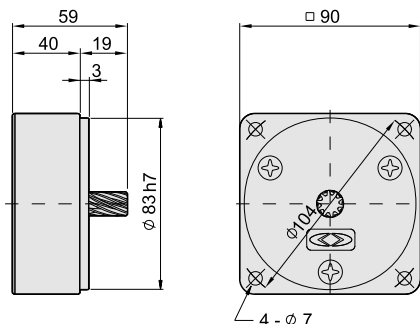


Decimal Gear Head

G-5U10X-K

Speed - Torque Curve

M-5RK60_N-AF

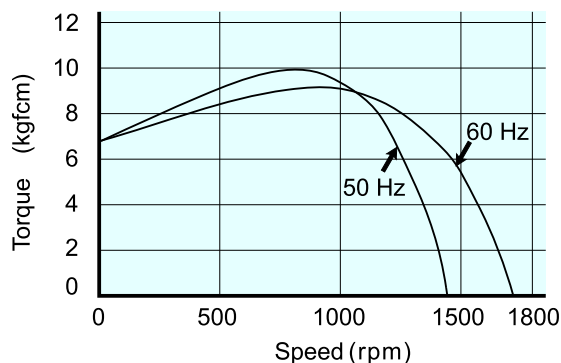
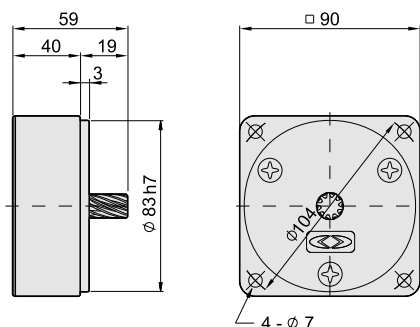


Decimal Gear Head

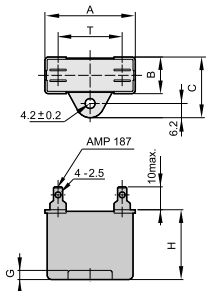
G-5U10X-K

Speed - Torque Curve

M-5RK90U-AF

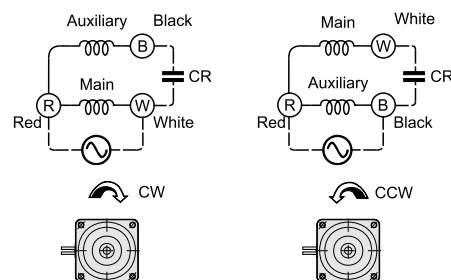


■ Dimensions and Specifications - Capacitor



Capacitor μF(V)	A	B	C	H	G	T	Max.Temp
20(250V)	50	22	32	35	4.5	32	60°C
5(450V)	50	22	32	35	4.5	32	70°C
25(250V)	50	22	32	35	4.5	32	60°C
6(450V)	50	22	32	35	4.5	32	70°C

■ Wiring Diagram



■ Gearhead - Max. Permissible Torque

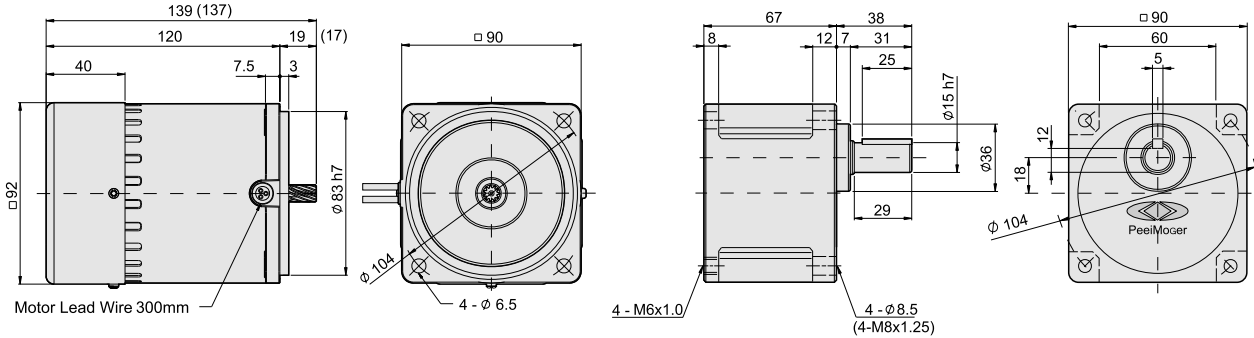
Dark area: the rotating direction of motor shaft rotates in the same direction as the shaft of gearhead.
Shallow area the rotating direction of motor shaft is opposite to the direction of the shaft of gearhead.

Model	Speed (rpm)	With Decimal Gearhead																						
		500	300	200	180	150	120	100	90	75	60	50	30	20	15	10	9	7.5	6	5	3	2	1.5	1
G-5N□-K L G-5U□-K G-5U□-KH	Speed	500	300	200	180	150	120	100	90	75	60	50	30	20	15	10	9	7.5	6	5	3	2	1.5	1
	50Hz Gear Ratio	3	5	7.5	10	12.5	15	20	25	30	36	60	75	100	150	200	200	250	300	500	750	1000	1500	
	60Hz Gear Ratio	3.6	6	9	10	15	18	20	30	36	45	60	90	120	180	200	300	300	360	600	900	1200	1800	
G-5U□-K G-5U□-KH	Max. Allowable Torque (kgfcm)	6.7	11	16	18	23	28	33	36	45	54	65	100	100	100	100	100	100	100	100	100	100	100	
	Dark area	10	16	24	27	32	40	48	54	64	77	93	155	200	200	200	200	200	200	200	200	200	200	
	Shallow area	-	-	-	-	-	-	-	-	-	-	-	155	226	300	300	300	300	-	-	300	300	300	300
G-5U□-K G-5U□-KH	Max. Allowable Torque (kgfcm)	14	23	35	38	46	58	69	77	92	111	133	216	200	200	200	200	200	200	200	200	200	200	
	Dark area	-	-	-	-	-	-	-	-	-	-	-	216	300	300	300	300	300	-	-	300	300	300	300
	Shallow area	-	-	-	-	-	-	-	-	-	-	-	-	300	300	300	300	300	-	-	300	300	300	300

Single Phase Reversible Motor

Frame **5** Motor
M-5RK60^N-□□
Output **60W**

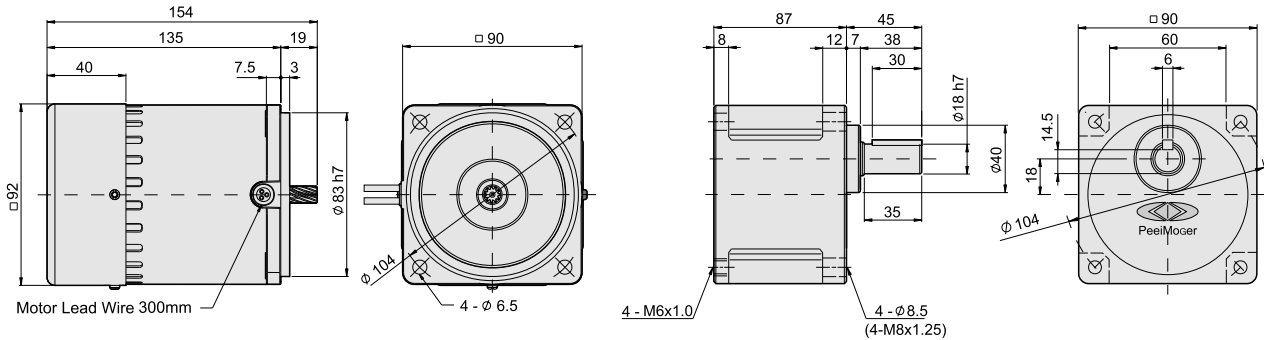
Gear Head
G-5U□-K



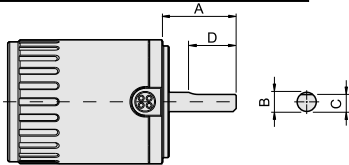
● () The dimension of Parenthesis is N model gear shaft and the dimension of applied Gearhead ,as G-5N□-K/L

Frame **5** Motor
M-5RK90U-□□
Output **90W**

Gear Head
G-5U□-KH (Developing)

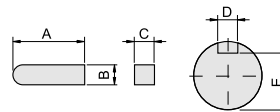


Dimensions - Motor, Round Shaft



Model	A	B	C	D
M-5RK60A-□□	37	∅ 12 h7	11 ⁰ _{-0.15}	30
M-5RK90A-□□	37	∅ 12 h7	11 ⁰ _{-0.15}	30

Dimensions - Key & Keyway



Model	A	B	C	D	E
G-5U□-K	25	5 ⁰ _{-0.030}	5 ⁰ _{-0.030}	5 ^{+0.050} ₊₀	12 ⁰ _{-0.15}
G-5U□-KH	30	6 ⁰ _{-0.030}	6 ⁰ _{-0.030}	6 ^{+0.050} ₊₀	14.5 ⁰ _{-0.15}

Specifications - Motor

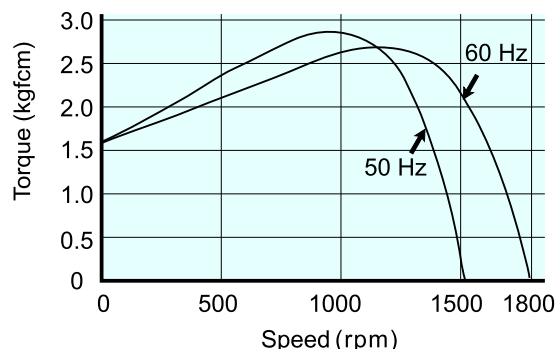
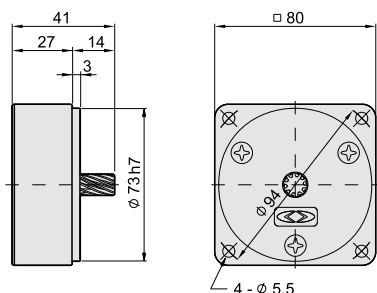
Model	Poles	Output (w)	Voltage (V)	Frequency (Hz)	Duty	Rated Load			Starting Current (A)	Starting Torque (kgfcm)	Capacitor μ (F)	Applied Gearhead Type		
						Current (A)	Speed (r.p.m)	Torque (kgfcm)				Metal Bearing	Ball Bearing	Decimal Gearhead
M-5RK60 ^N -AF	4	60	110	50	30min	1.5	1250	4.7	2.4	5.5	20(250V)	G-5N□-L	G-5N□-K	G-5N10X-K
				60		1.6	1550	3.8	2.4	5.4			G-5U□-K	G-5U10X-K
M-5RK60 ^N -AF	4	60	220	50	30min	0.75	1250	4.7	1.2	5.5	5(450V)	-	G-5U□-KH	G-5U10X-K
				60		0.80	1550	3.8	1.2	5.5				
M-5RK90U-AF	4	90	110	50	30min	1.9	1200	7.3	3.0	6.8	25(250V)	-	G-5U□-K	G-5U10X-K
				60		1.9	1500	5.8	3.0	6.8				
M-5RK90U-CF	4	90	220	50	30min	0.95	1200	7.3	1.5	6.8	6(450V)	-	G-5U□-KH	G-5U10X-K
				60		0.95	1500	5.8	1.5	6.8				

Decimal Gear Head

G-4N10X-K

Speed - Torque Curve

M-4RK25N-A

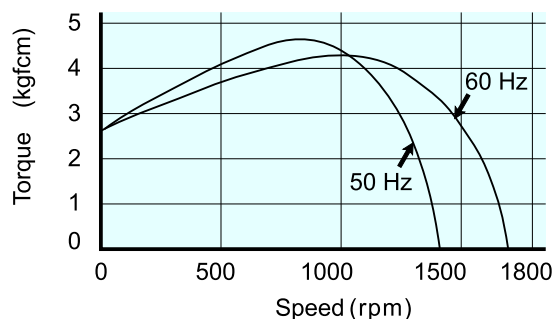
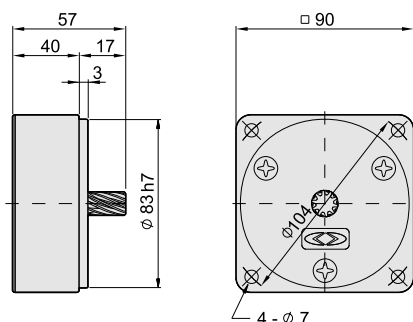


Decimal Gear Head

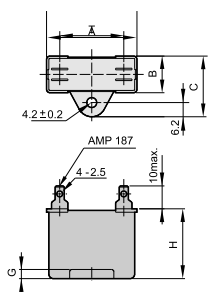
G-5N10X-K

Speed - Torque Curve

M-5RK40N-A

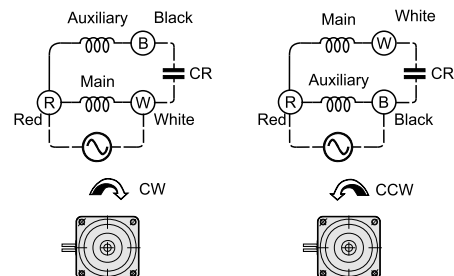


Dimensions and Specifications - Capacitor



Capacitor (μF/V)	A	B	C	H	G	T	Max.Temp
7(250V)	38	20	30	29	5	22	60°C
2(450V)	38	20	30	29	5	22	70°C
10(250V)	38	20	30	29	5	22	60°C
2.5(450V)	38	20	30	29	5	22	70°C

Wiring Diagram



Gearhead - Max. Permissible Torque

Dark area: the rotating direction of motor shaft rotates in the same direction as the shaft of gearhead.
 Shallow area: the rotating direction of motor shaft is opposite to the direction of the shaft of gearhead.

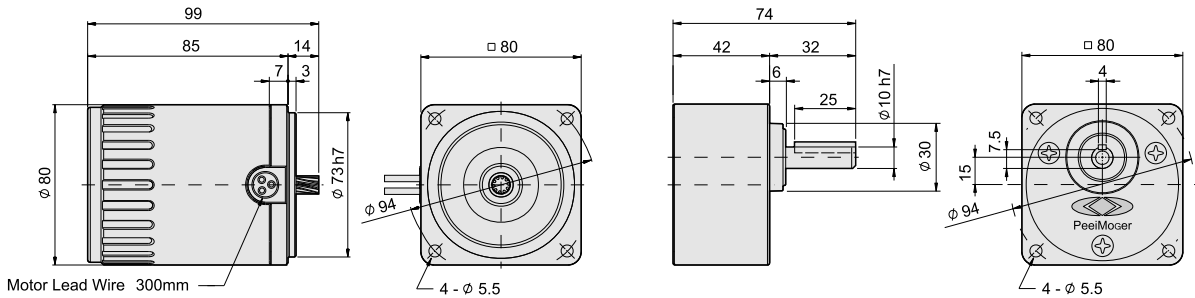
Model	Speed (rpm)	With Decimal Gearhead																						
		500	300	200	180	150	120	100	90	75	60	50	30	20	15	10	9	7.5	6	5	3	2	1.5	1
	Gear Ratio	3	5	7.5	-	10	12.5	15	-	20	25	30	50	75	100	150	200	200	250	300	500	750	1000	1500
	50Hz	3.6	6	9	-	10	15	18	-	20	30	36	60	90	120	180	200	200	300	360	600	900	1200	1800
G-4N□-K L	Max. Allowable Torque (kgfcm)	4.0	6.7	10	11	13	16	20	21	26	32	39	65	80	80	80	80	80	80	80	80	80	80	80
G-5N□-K L	Max. Allowable Torque (kgfcm)	6.7	11	16	18	23	28	33	36	45	54	65	100	100	100	100	100	100	100	100	100	100	100	100

Single Phase Reversible Motor

Frame **4** Motor
M-4RK25N-□□

Output **25W**

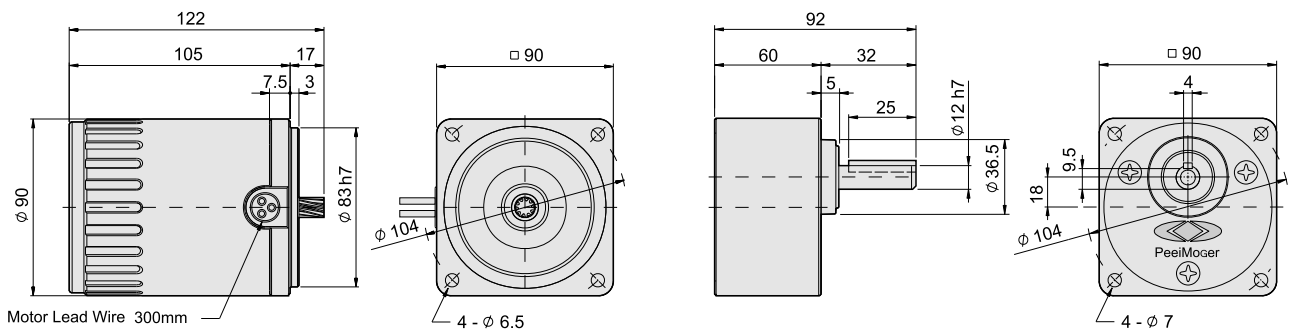
Gear Head
G-4N□- $\begin{matrix} K \\ L \end{matrix}$



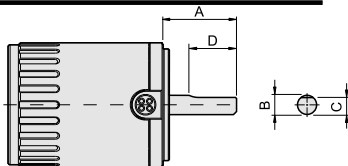
Frame **5** Motor
M-5RK40N-□□

Output **40W**

Gear Head
G-5N□- $\begin{matrix} K \\ L \end{matrix}$

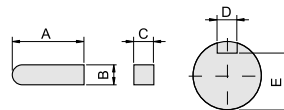


Dimensions - Motor, Round Shaft



Model	A	B	C	D
M-4RK25A-□□	32	∅8 h7	7 ⁰ _{-0.15}	25
M-5RK40A-□□	37	∅10 h7	9 ⁰ _{-0.15}	30

Dimensions - Key & Keyway



Model	A	B	C	D	E
G-4N□- $\begin{matrix} K \\ L \end{matrix}$	25	4 ⁰ _{-0.030}	4 ⁰ _{-0.030}	4 ^{+0.060} _{+0.010}	7.5 ⁰ _{-0.15}
G-5N□- $\begin{matrix} K \\ L \end{matrix}$	25	4 ⁰ _{-0.030}	4 ⁰ _{-0.030}	4 ^{+0.060} _{+0.010}	9.5 ⁰ _{-0.15}

Specifications - Motor

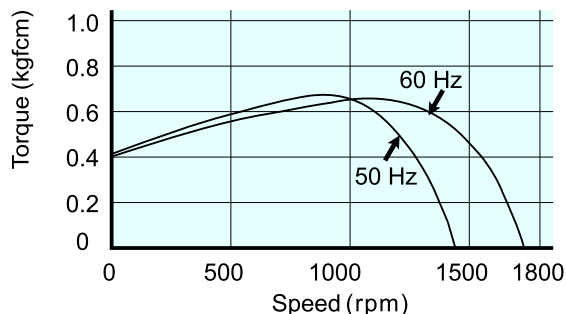
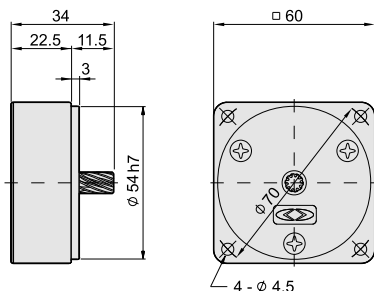
Model	Poles	Output (W)	Voltage (V)	Frequency (Hz)	Duty	Rated Load			Starting Current (A)	Starting Torque (kgfcm)	Capacitor uF(V)	Applied Gearhead Type		
						Current (A)	Speed (r p m)	Torque (kgfcm)				Metal Bearing	Ball Bearing	Decimal Gearhead
M-4RK25N-A	4	25	110	50	30min	0.55	1300	1.9	1.0	1.4	7(250V)	G-4N□-L	G-4N□-K	G-4N10X-K
				60		0.58	1625	1.5	1.0	1.5				
M-4RK25N-C	4	25	220	50	30min	0.28	1300	1.9	0.5	1.4	2(450V)	G-4N□-L	G-4N□-K	G-4N10X-K
				60		0.29	1625	1.5	0.5	1.5				
M-5RK40N-A	4	40	110	50	30min	0.95	1150	3.3	1.6	2.6	10(250V)	G-5N□-L	G-5N□-K	G-5N10X-K
				60		0.93	1475	2.6	1.6	2.6				
M-5RK40N-C	4	40	220	50	30min	0.48	1150	3.3	0.8	2.6	2.5(450V)	G-5N□-L	G-5N□-K	G-5N10X-K
				60		0.47	1475	2.6	0.8	2.6				

Decimal Gear Head

G-2N10X-K

Speed - Torque Curve

M-2RK6N-A

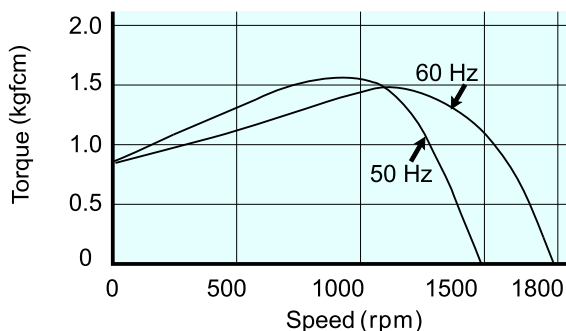
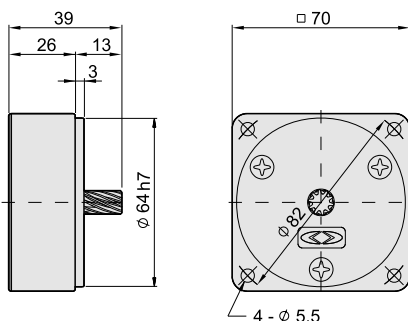


Decimal Gear Head

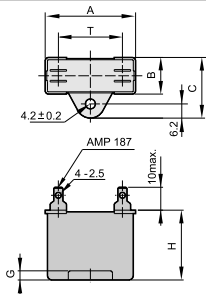
G-3N10X-K

Speed - Torque Curve

M-3RK15N-A

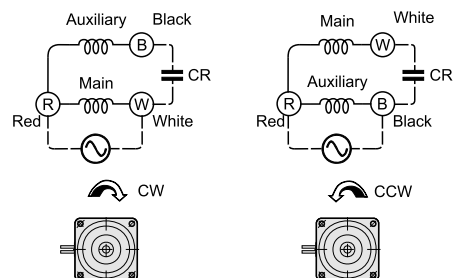


Dimensions and Specifications - Capacitor



Capacitor (uF/V)	A	B	C	H	G	T	Max. Temp
3.5(250V)	32	13	23	21	4	17	60°C
1(450V)	37	12.5	22.5	22	5	22	70°C
5(250V)	32	13	23	21	4	17	60°C
1.2(450V)	37	12.5	22.5	22	5	22	70°C

Wiring Diagram



Gearhead - Max. Permissible Torque

Dark area: the rotating direction of motor shaft rotates in the same direction as the shaft of gearhead.
 Shallow area the rotating direction of motor shaft is opposite to the direction of the shaft of gearhead.

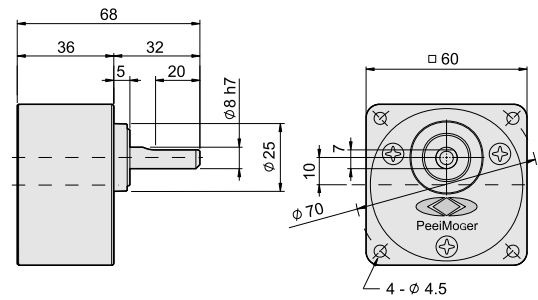
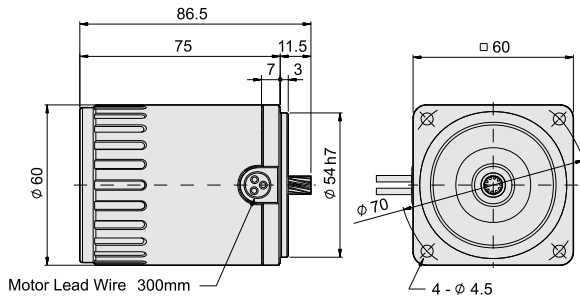
Model	Speed (rpm)	With Decimal Gearhead																						
		500	300	200	180	150	120	100	90	75	60	50	30	20	15	10	9	7.5	6	5	3	2	1.5	1
G-2N□-K L	Speed	3	5	7.5	-	10	12.5	15	-	20	25	30	50	75	100	150	200	250	300	500	750	1000	1500	1800
	Gear Ratio	3.6	6	9	10	-	15	18	20	30	36	60	90	120	180	200	300	360	600	900	1200	1800	1800	1800
G-3N□-K L	Speed	3	5	7.5	-	10	12.5	15	-	20	25	30	50	75	100	150	200	250	300	500	750	1000	1500	1800
	Gear Ratio	3.6	6	9	10	-	15	18	20	30	36	60	90	120	180	200	300	360	600	900	1200	1800	1800	1800
G-2N□-K L	Max. Allowable Torque (kgfcm)	1.0	1.6	2.5	2.7	3.4	4.1	5.0	5.4	6.7	8.1	9.7	16	23	25	25	25	25	25	25	25	25	25	25
	Max. Allowable Torque (kgfcm)	2.4	2.7	6.0	6.7	8.2	10	12	13	16	19	23	39	50	50	50	50	50	50	50	50	50	50	50

Single Phase Reversible Motor

Frame **2** Motor
M-2RK6N-□□

Output **6W**

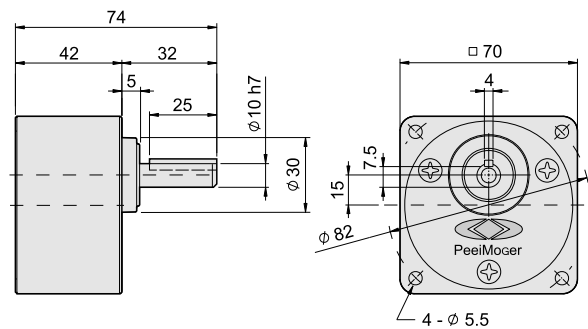
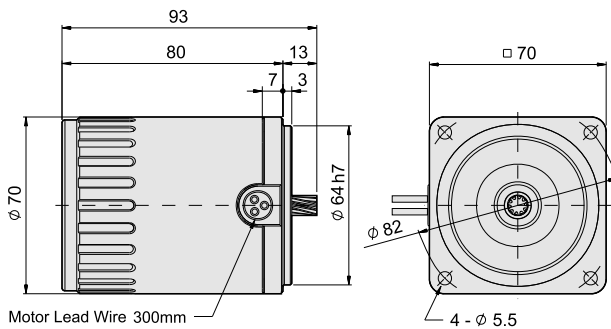
Gear Head
G-2N□- $\begin{matrix} K \\ L \end{matrix}$



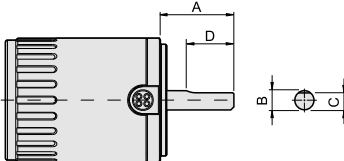
Frame **3** Motor
M-3RK15N-□□

Output **15W**

Gear Head
G-3N□- $\begin{matrix} K \\ L \end{matrix}$

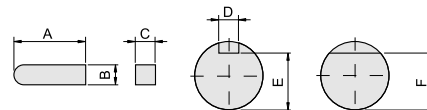


Dimensions - Motor, Round Shaft



Model	A	B	C	D
M-2RK6A-□□	24	φ6 h7	5.5 ⁰ _{-0.15}	20
M-3RK15A-□□	32	φ6 h7	5.5 ⁰ _{-0.15}	25

Dimensions - Key & Keyway



Model	A	B	C	D	E	F
G-2N□- $\begin{matrix} K \\ L \end{matrix}$	-	-	-	-	-	7 ⁰ _{-0.15}
G-3N□- $\begin{matrix} K \\ L \end{matrix}$	25	4 ⁰ _{-0.030}	4 ⁰ _{-0.030}	4 ^{+0.060} _{+0.010}	7.5 ⁰ _{-0.15}	-

Specifications - Motor

Model	Poles	Output (W)	Voltage (V)	Frequency (Hz)	Duty	Rated Load			Starting Current (A)	Starting Torque (kgfcm)	Capacitor uF(V)	Applied Gearhead Type		
						Current (A)	Speed (r p m)	Torque (kgfcm)				Metal Bearing	Ball Bearing	Decimal Gearhead
M-2RK6N-A	4	6	110	50	30min	0.23	1225	0.46	0.31	0.40	3.5(250V)	G-2N□-L	G-2N□-K	G-2N10X-K
				60		0.23	1550	0.37	0.31	0.40				
M-2RK6N-C	4	6	220	50	30min	0.12	1225	0.46	0.16	0.40	1(450V)	G-2N□-L	G-2N□-K	G-2N10X-K
				60		0.12	1550	0.37	0.16	0.40				
M-3RK15N-A	4	15	110	50	30min	0.36	1250	1.10	0.59	0.84	5(250V)	G-3N□-L	G-3N□-K	G-3N10X-K
				60		0.38	1575	0.90	0.57	0.84				
M-3RK15N-C	4	15	220	50	30min	0.18	1250	1.10	0.30	0.84	1.2(450V)	G-3N□-L	G-3N□-K	G-3N10X-K
				60		0.19	1575	0.90	0.29	0.84				